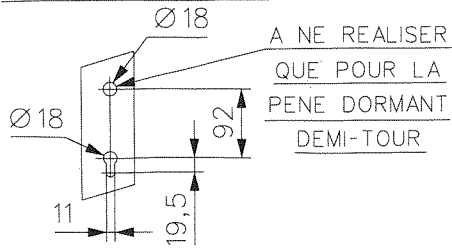


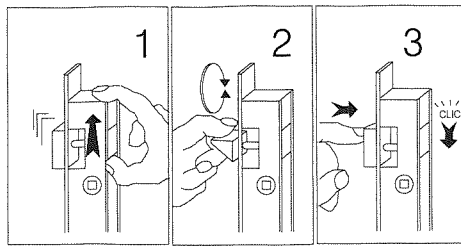
NOTICE DE POSE VERSION PENE DORMANT ET PENE 1/2 TOUR

RECOMMANDATIONS

- POUR EXECUTER LE MORTAISAGE UTILISER LE GABARIT 2836.03.1
- PROCEDER AU NETTOYAGE DU PROFIL AVANT LA POSE

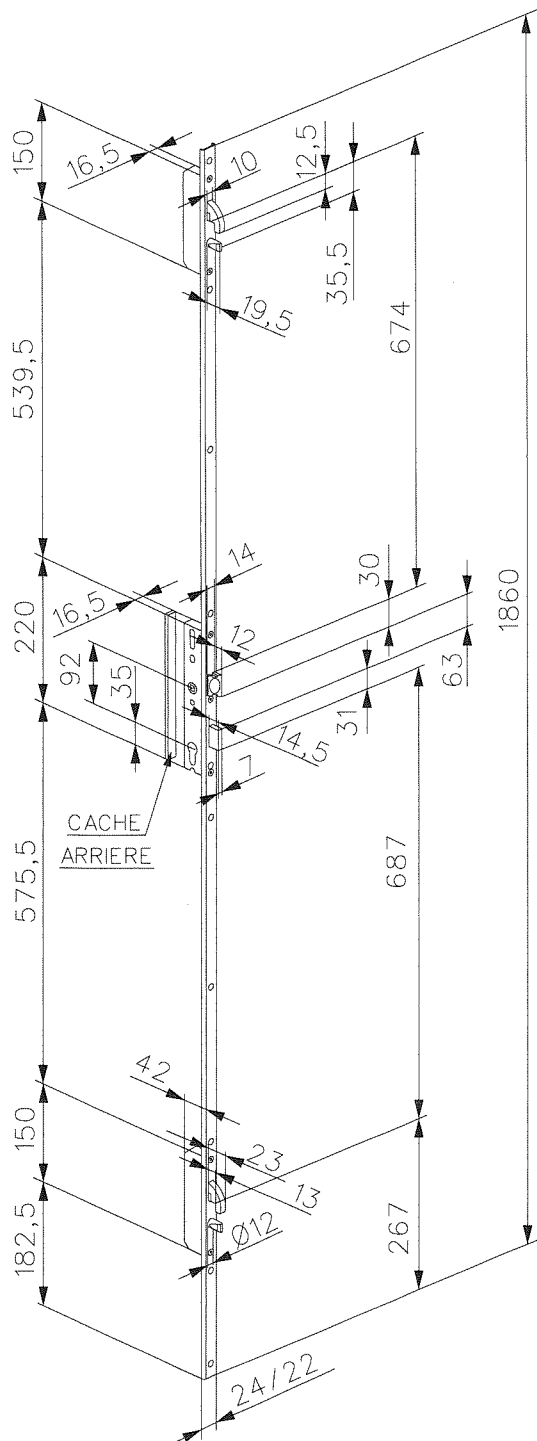
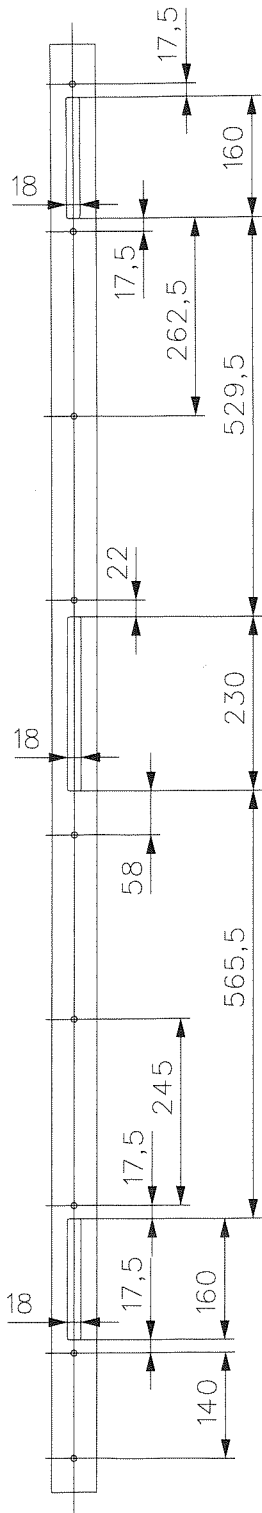


RETOURNEMENT DU DEMI-TOUR

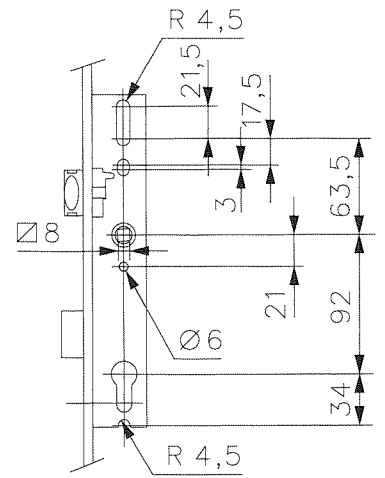


IMPERATIF:

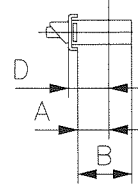
LE CACHE ARRIERE DU BOITIER CENTRAL DOIT ETRE REMIS EN PLACE APRES LE RETOURNEMENT DU DEMI-TOUR



POSITION DES LUMIERES POUR LA FIXATION DES ENSEMBLES



AXE DU BARILLET



TETIERE U LARG 22 / 24

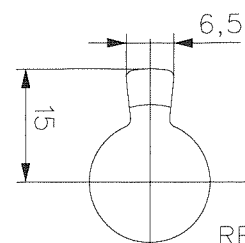
A	B	D
21	36	27
24	39	30
26	41	32
30	45	36

TETIERE PLATE LARG 22

25	40	28
30	45	33

ATTENTION:

UTILISER UNIQUEMENT UN BARILLET EUROPEEN PANNETON DIN



REF : 272369 E